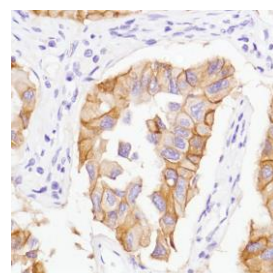




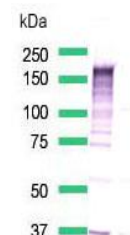
## Rabbit Anti-Human Epidermal Growth Factor Receptor (EGFR) (L858R) Monoclonal Antibody (Clone SP125)

### CATALOG #:

- M4250** 0.1 ml rabbit monoclonal antibody purified by protein A/G in PBS/1% BSA buffer pH 7.6 with less than 0.1% sodium azide.
- M4252** 0.5 ml rabbit monoclonal antibody purified by protein A/G in PBS/1% BSA buffer pH 7.6 with less than 0.1% sodium azide.
- M4254** 1.0 ml rabbit monoclonal antibody purified by protein A/G in PBS/1% BSA buffer pH 7.6 with less than 0.1% sodium azide.
- M4251** 7.0 ml pre-diluted rabbit monoclonal antibody purified by protein A/G in TBS/1% BSA buffer pH 7.6 with less than 0.1% sodium azide.



*Human lung carcinoma stained with anti-EGFR (L858R) antibody*



*Western Blot analysis of H1975 cell lysate with anti-EGFR (L858R) antibody*

### INTENDED USE:

For Research Use Only. Not for use in diagnostic procedures.

### CLONE:

SP125

### IMMUNOGEN:

Synthetic EGFR peptide with L858R mutation.

### IG ISOTYPE:

Rabbit IgG

### EPITOPE:

Not determined

### MOLECULAR WEIGHT:

175 kDa

### SPECIES REACTIVITY:

Human (tested). (See [www.springbio.com](http://www.springbio.com) for information on species reactivity predicted by sequence homology.)

### DESCRIPTION:

EGFR is a transmembrane tyrosine kinase of HER/erbB protein family. EGFR somatic mutations such as L858R in exon 21 and short in-frame deletion of E746-A750 in exon 19 are present in a subset of lung adenocarcinoma.

### APPLICATIONS:

Immunohistochemistry (IHC) and Western Blotting

### IHC PROCEDURE:

**Specimen Preparation:** Formalin-fixed, paraffin-embedded tissues are suitable for use with this primary antibody.

**Deparaffinization:** Deparaffinize slides using xylene or xylene alternative and graded alcohols.

**Antibody Dilution:** If using the concentrate format of this product, dilute the antibody 1:100. The dilutions are estimates; actual results may differ because of variability in methods and protocols.

**Antigen Retrieval:** Boil tissue section in EDTA buffer, pH 8.0 for 10 min followed by cooling at room temperature for 20 min.

**Primary Antibody Incubation:** Incubate for 10 minutes at room temperature.

**Slide Washing:** Slides must be washed in between steps. Rinse slides with PBS/0.05% Tween.

**Visualization:** Detect the antibody as instructed by the instructions provided with the visualization system.

### IHC POSITIVE CONTROL:

Lung Carcinoma with L858R Mutation

### WESTERN BLOTTING:

Recommended starting protocol: Dilute the antibody 1:200. Incubate for 1 hour at room temperature.

The dilution is an estimate; actual results may differ because of variability in methods and protocols. Optimal dilution and procedure should be determined by the end user.

### WESTERN BLOTTING

#### POSITIVE CONTROL:

H1975

#### CELLULAR LOCALIZATION:

Cytoplasm, Membrane

**STORAGE & STABILITY:**

Store at 2-8°C. Do not freeze. The user must validate any other storage conditions. When properly stored, the reagent is stable to the date indicated on the label. Do not use the reagent beyond the expiration date.

There are no definitive signs to indicate instability of this product; therefore, positive and negative controls should be tested simultaneously with unknown specimens.

If unexpected results are observed which cannot be explained by variations in laboratory procedures and a problem with the reagent is suspected, contact Technical Support at [spring.tech@ventana.roche.com](mailto:spring.tech@ventana.roche.com).

**WARNINGS &  
PRECAUTIONS:**

1. Avoid contact of reagents with eyes and mucous membranes. If reagents come into contact with sensitive areas, wash with copious amounts of water.
2. This product is harmful if swallowed.
3. Consult local or state authorities with regard to recommended method of disposal.
4. Avoid microbial contamination of reagents.